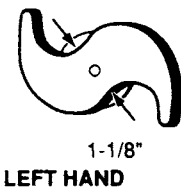
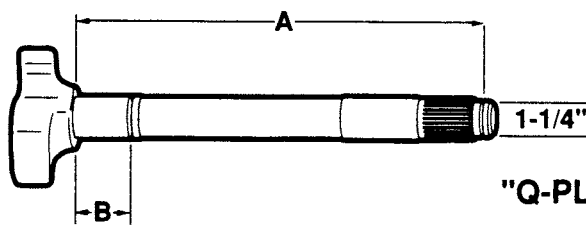


BRAKE CAMSHAFTS - DRIVE AXLE

Meritor "Q" And "Q-Plus"



"A" Dimension: under head to beginning of lock ring groove.

1-1/2" Dia. - 28 Spline

LH	RH	A	B	C	NOTES	REPLACES	
C083L		REPLACED BY C681L			"Q"	Batco 04-461532 BWP M-3116L Euclid E-9083 Leland L-3335	Meritor 2210L5784 Midland Spicer 18-713
		15-3/16"	-	-	Camshaft Kits		
					B8707 B8771	Batco 04-461531 BWP M-3116R Euclid E-9084 Leland L-3334	Meritor 2210K5783 Midland Spicer 18-712
	C084R	REPLACED BY C682R			B8745 (Mack)		
C681L		REPLACED BY C681L			"Q-Plus"	Batco 04-481532 BWP M-3685L Euclid E-9681 Leland L-3111	Meritor 2210A7671 Midland CS40198 Spicer 18-541
		15-3/16"	-	-	Camshaft Kits		
					B8707 B8771	Batco 04-481531 BWP M-3685R Euclid E-9682 Leland L-3110	Meritor 2210Z7670 Midland CS40199 Spicer 18-540
	C682R	REPLACED BY C682R			B8745 (Mack)		
C306L		REPLACED BY C307R			"Q-Plus"	Batco BWP Euclid E-10306A Leland	Meritor 2210N7684 Midland Spicer
		15-19/32"	-	-	Camshaft Kits		
					B8707 B8771	Batco BWP Euclid E-10307A Leland	Meritor 2210M7683 Midland Spicer
	C307R	REPLACED BY C307R			B8745 (Mack)		
C185L		REPLACED BY C683L			"Q"	Batco 04-461572 BWP M-3117L Euclid E-9085 Leland L-3331	Meritor 2210L5394 Midland Spicer
		15-23/32"	-	-	Camshaft Kit		
					B8707	Batco 04-461571 BWP M-3117R Euclid E-9086 Leland L-3330	Meritor 2210K5393 Midland Spicer
	C186R	REPLACED BY C684R			B8707		
C683L		REPLACED BY C683L			"Q-Plus"	Batco 04-481572 BWP Euclid E-9683 Leland L-3507	Meritor 2210S7689 Midland Spicer 18-543
		15-23/32"	-	-	Camshaft Kits		
					B8707 B8771	Batco 04-481571 BWP Euclid E-9684 Leland L-3506	Meritor 2210R7688 Midland Spicer 18-542
	C684R	REPLACED BY C684R			B8745 (Mack)		
C585L		REPLACED BY C584R			"Q-Plus"	Batco BWP Euclid E-11585 Leland	Meritor 2210W7693 Midland Spicer
		15-13/16"	-	-	Camshaft Kits		
					B8707 B8771	Batco BWP Euclid E-11584 Leland	Meritor 2210V7692 Midland Spicer
	C584R	REPLACED BY C584R			B8745 (Mack)		