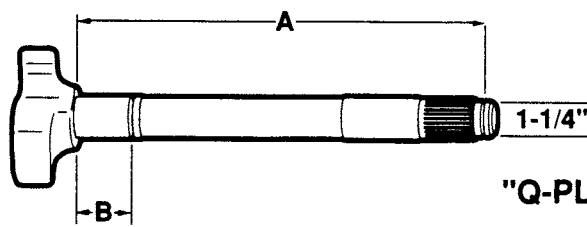


BRAKE CAMSHAFTS - DRIVE AXLE

Meritor "Q" And "Q-Plus"



1-1/2" Dia. - 28 Spline

"A" Dimension: under head to beginning of lock ring groove.

LH	RH	A	B	C	NOTES	REPLACES
C569L		13-19/32"	-	-	"Q-Plus" Camshaft Kits B8707 B8771 B8745 (Mack)	Batco BWP Euclid E-11569 Leland Batco BWP Euclid E-11568 Leland Meritor 2210Q7609 Midland Spicer
	C568R					
C735L		REPLACED BY C675L			"Q"	Batco 04-461422 BWP M-2599L Euclid E-4735 Leland L-2343 Meritor 2210N5370 Midland Spicer 18-835
		14-3/32"	-	-	Camshaft Kits B8707 B8771 B8745 (Mack)	Batco 04-461421 BWP M-2599R Euclid E-4734 Leland L-2342 Meritor 2210M5369 Midland Spicer 18-834
	C734R	REPLACED BY C676R				
C675L		14-3/32"	-	-	"Q-Plus" Camshaft Kits B8707 B8771 B8745 (Mack)	Batco 04-481422 BWP M-3683L Euclid E-9675 Leland L-3107 Meritor 2210J7628 Midland CS40192 Spicer 18-535
	C676R					Batco 04-481421 BWP M-3683R Euclid E-9676 Leland L-3106 Meritor 2210H7626 Midland CS40193 Spicer 18-534
C085L		REPLACED BY C677L			"Q"	Batco 04-461462 BWP M-3115L Euclid E-9081 Leland L-2891 Meritor 2210L5446 Midland Spicer 18-781
		14-19/32"	-	-	Camshaft Kits B8707 B8771 B8745 (Mack)	Batco 04-461461 BWP M-3115R Euclid E-9082 Leland L-2890 Meritor 2210K5445 Midland Spicer 18-780
	C086R	REPLACED BY C678R				
C677L		14-19/32"	-	-	"Q-Plus" Camshaft Kits B8707 B8771 B8745 (Mack)	Batco 04-481462 BWP E-9677 Euclid L-3339 Leland Meritor 2210A7645 Midland CS40196 Spicer 18-537
	C678R					Batco 04-481461 BWP E-9678 Euclid L-3338 Leland Meritor 2210Z7644 Midland CS40197 Spicer 18-536
C679L		14-3/4"	-	-	"Q-Plus" Camshaft Kits B8707 B8771 B8745 (Mack)	Batco 04-481472 BWP M-3684L Euclid E-9679 Leland L-3109 Meritor 2210J7654 Midland Spicer 18-539
	C680R					Batco 04-481471 BWP M-3684R Euclid E-9680 Leland L-3108 Meritor 2210H7652 Midland Spicer 18-538