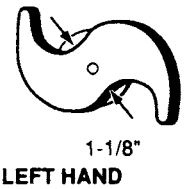
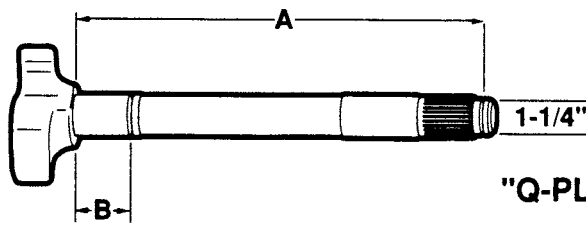


BRAKE CAMSHAFTS - DRIVE AXLE

Meritor "Q" And "Q-Plus"



"A" Dimension: under head to beginning of lock ring groove.

LH	RH	A	B	C	NOTES	REPLACES	
C537L		11-9/16"	-	-	"Q-Plus"	Batco 04-481152 BWP M-3112L Euclid E-9661 Leland L-3099	Meritor 2210W7537 Midland CS40184 Spicer 18-519
					Camshaft Kits		
	C536R				B8707 B8771 B8745 (Mack)	Batco 04-481151 BWP M-3112R Euclid E-9662 Leland L-3098	Meritor 2210V7536 Midland CS40185 Spicer 18-518
C882L		REPLACED BY C663L			"Q"	Batco 04-461162 BWP Euclid E-6882L Leland L-3035	Meritor 2210H5416 Midland Spicer 18-867
		11-11/16"	-	-	Camshaft Kits		
	C883R	REPLACED BY C664R			B8707 B8771 B8745 (Mack)	Batco 04-461161 BWP Euclid E-6883R Leland L-3034	Meritor 2210G5415 Midland Spicer 18-866
C663L		11-11/16"	-	-	"Q-Plus"	Batco 04-481172 BWP Euclid E-9663 Leland L-3575	Meritor 2210C7543 Midland CS41152 Spicer 18-521
					Camshaft Kits		
	C664R				B8707 B8771 B8745 (Mack)	Batco 04-481171 BWP Euclid E-9664 Leland L-3574	Meritor 2210B7542 Midland CS41153 Spicer 18-520
C665L		11-15/16"	-	-	"Q-Plus"	Batco 04-481212 BWP M-3113L Euclid E-9665 Leland L-3419	Meritor 2210L7552 Midland Spicer 18-523
					Camshaft Kits		
	C666R				B8707 B8771 B8745 (Mack)	Batco 04-481211 BWP M-3113R Euclid E-9666 Leland L-3418	Meritor 2210K7551 Midland Spicer 18-522
C894L		REPLACED BY C667L			"Q"	Batco 04-461252 BWP M-2606L Euclid E-4894 Leland L-2881	Meritor 2210X5328 Midland Spicer 18-869
		12-7/16"	-	-	Camshaft Kits		
	C895R	REPLACED BY C668R			B8707 B8771 B8745 (Mack)	Batco 04-461251 BWP M-2606R Euclid E-4895 Leland L-2880	Meritor 2210W5327 Midland Spicer 18-868
C667L		12-7/16"	-	-	"Q-Plus"	Batco 04-481252 BWP Euclid E-9667 Leland L-3483	Meritor 2210C7569 Midland CS41154 Spicer 18-525
					Camshaft Kits		
	C668R				B8707 B8771 B8745 (Mack)	Batco 04-481251 BWP Euclid E-9668 Leland L-3482	Meritor 2210B7568 Midland CS41155 Spicer 18-524