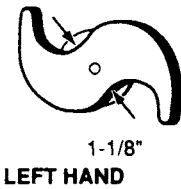
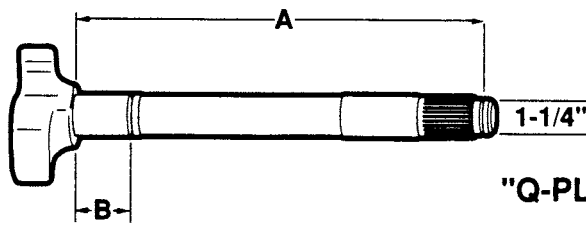


BRAKE CAMSHAFTS - DRIVE AXLE

Meritor "Q" And "Q-Plus"



"Q-PLUS"
"A" Dimension: under head to beginning of lock ring groove.

1-1/2" Dia. - 28 Spline

LH	RH	A	B	C	NOTES	REPLACES
C541L		10-19/32"	-	-	"Q-Plus" Camshaft Kits B8707 B8771 B8745 (Mack)	Batco BWP Euclid E-11541 Leland Batco BWP Euclid E-11540 Leland Meritor 2210L7500 Midland Spicer
C540R						
C727L		REPLACED BY C657L			"Q" Camshaft Kits B8707 B8771 B8745 (Mack)	Batco 04-461102 BWP M-2612L Euclid E-4727 Leland L-2877 Meritor 2210Z5434 Midland Spicer 18-829
C726R		10-7/8"	-	-		Batco 04-461101 BWP M-2612R Euclid E-4726 Leland L-2876 Meritor 2210Y5433 Midland Spicer 18-828
C657L		10-7/8"	-	-	"Q-Plus" Camshaft Kits B8707 B8771 B8745 (Mack)	Batco 04-481112 BWP Euclid E-9657 Leland L-3415 Meritor 2210A7515 Midland CS41160 Spicer 18-515
C658R						Batco 04-481111 BWP Euclid E-9658 Leland L-3414 Meritor 2210Z7514 Midland CS41161 Spicer 18-514
C349L		REPLACED BY C524L			"Q" Camshaft Kits B8707 B8771 B8745 (Mack)	Batco 04-461122 BWP M-2613L Euclid E-3349 Leland L-2341 Meritor 2210V5326 Midland Spicer 18-831
C350R		11-7/32"	-	-		Batco 04-461121 BWP M-2613R Euclid E-3350 Leland L-2340 Meritor 2210U5325 Midland Spicer 18-830
C524L		11-1/8"	-	-	"Q-Plus" Camshaft Kits B8707 B8771 B8745 (Mack)	Batco 04-481122 BWP M-3111L Euclid E-9659 Leland L-3097 Meritor 2210J7524 Midland CS40182 Spicer 18-517
C522R						Batco 04-481121 BWP M-3111R Euclid E-9660 Leland L-3096 Meritor 2210H7522 Midland CS40183 Spicer 18-516
C351L		REPLACED BY C537L			"Q" Camshaft Kits B8707 B8771 B8745 (Mack)	Batco 04-461152 BWP M-2614L Euclid E-3351 Leland L-2339 Meritor 2210B5332 Midland Spicer 18-833
C352R		11-9/16"	-	-		Batco 04-461151 BWP M-2614R Euclid E-3352 Leland L-2338 Meritor 2210A5331 Midland Spicer 18-832