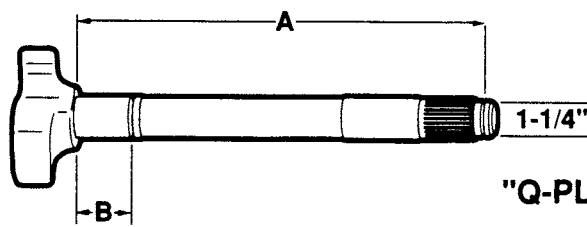


BRAKE CAMSHAFTS - DRIVE AXLE

Meritor "Q" And "Q-Plus"



LH	RH	A	B	C	NOTES	REPLACES	
C651L		9-1/16"	-	-	"Q-Plus" Camshaft Kits B8707 B8771 B8745 (Mack)	Batco 04-480922 BWP Euclid E-9651 Leland L-3399	Meritor 2210G7443 Midland CS41158 Spicer 18-507
	C652R				Batco 04-480921 BWP Euclid E-9652 Leland L-3398	Meritor 2210F7442 Midland CS41159 Spicer 18-506	
C649L		REPLACED BY C653L			"Q" Camshaft Kits B8707 B8771 B8745 (Mack)	Batco 04-460952 BWP Euclid E-4725 Leland L-2875	Meritor 2210T5428 Midland Spicer 18-865
	C650R	9-7/16"	-	-	REPLACED BY C654R	Batco 04-460951 BWP Euclid E-4724 Leland L-2874	Meritor 2210S5427 Midland Spicer 18-864
C653L		9-7/16"	-	-	"Q-Plus" Camshaft Kits B8707 B8771 B8745 (Mack)	Batco 04-480952 BWP Euclid E-9653 Leland L-3417	Meritor 2210U7457 Midland CS41150 Spicer 18-509
	C654R				Batco 04-480951 BWP Euclid E-9654 Leland L-3416	Meritor 2210T7456 Midland CS41151 Spicer 18-508	
C504L		10-3/16"	-	-	"Q-Plus" Camshaft Kits B8707 B8771 B8745 (Mack)	Batco 04-481032 BWP Euclid E-5504A Leland L-3091	Meritor 2210J6822 Midland Spicer 18-931
	C505R				Batco 04-481031 BWP Euclid E-5505A Leland L-3090	Meritor 2210H6820 Midland Spicer 18-930	
C347L		REPLACED BY C655L			"Q" Camshaft Kits B8707 B8771 B8745 (Mack)	Batco 04-461052 BWP M-3179L Euclid E-3347 Leland L-2873	Meritor 2210F5362 Midland Spicer 18-827
	C348R	10-13/32"	-	-	REPLACED BY C656R	Batco 04-461051 BWP M-3179R Euclid E-3348 Leland L-2872	Meritor 2210E5361 Midland Spicer 18-826
C655L		10-13/32"	-	-	"Q-Plus" Camshaft Kits B8707 B8771 B8745 (Mack)	Batco 04-481042 BWP Euclid E-9655 Leland L-3093	Meritor 2210E7493 Midland CS40178 Spicer 18-511
	C656R				Batco 04-481041 BWP Euclid E-9656 Leland L-3092	Meritor 2210D7492 Midland CS40179 Spicer 18-510	