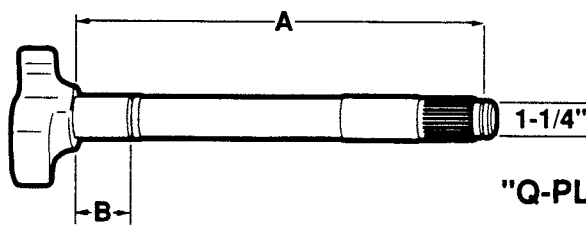
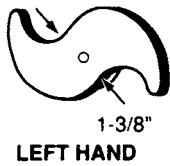


BRAKE CAMSHAFTS - DRIVE AXLE

Meritor "Q" And "Q-Plus"



"Q-PLUS"
"A" Dimension: under head to beginning of lock ring groove.

1-1/2" Dia. - 28 Spline

LH	RH	A	B	C	NOTES	REPLACES
C645L		7-23/32"	-	-	"Q-Plus" Camshaft Kits B8707 B8771 B8745 (Mack)	Batco 04-480772 BWP M-3108L Euclid E-9645 Leland L-3039 Meritor 2210L7396 Midland CS40172 Spicer 18-501
C646R						Batco 04-480771 BWP M-3108R Euclid E-9646 Leland L-3038 Meritor 2210K7395 Midland CS40173 Spicer 18-500
C499L		REPLACED BY C647L			"Q"	Batco 04-460822 BWP Euclid E-4999 Leland L-2869 Meritor 2210H5338 Midland Spicer 18-861
C500R		8-1/16"	-	-	Camshaft Kits B8707 B8771 B8745 (Mack)	Batco 04-460821 BWP Euclid E-5000 Leland L-2868 Meritor 2210G5337 Midland Spicer 18-860
C647L		8-1/16"	-	-	"Q-Plus" Camshaft Kits B8707 B8771 B8745 (Mack)	Batco 04-480822 BWP Euclid E-9647 Leland L-3437 Meritor 2210Y7409 Midland CS41172 Spicer 18-503
C648R						Batco 04-480821 BWP Euclid E-9648 Leland L-3436 Meritor 2210X7408 Midland CS41173 Spicer 18-502
C896L		REPLACED BY C427L			"Q"	Batco 04-460852 BWP M-2605L Euclid E-4896 Leland L-2871 Meritor 2210F5440 Midland Spicer 18-825
C897R		8-9/16"	-	-	Camshaft Kits B8707 B8771 B8745 (Mack)	Batco 04-460851 BWP M-2605R Euclid E-4897 Leland L-2870 Meritor 2210E5439 Midland Spicer 18-824
C427L		8-9/16"	-	-	"Q-Plus" Camshaft Kits B8707 B8771 B8745 (Mack)	Batco 04-480862 BWP M-3109L Euclid E-9649 Leland L-3351 Meritor 2210Q7427 Midland CS40174 Spicer 18-505
C426R						Batco 04-480861 BWP M-3109R Euclid E-9650 Leland L-3350 Meritor 2210P7426 Midland CS40175 Spicer 18-504
C898L		REPLACED BY C651L			"Q"	Batco 04-460922 BWP M-3121L Euclid E-4898 Leland Meritor 2210V5456 Midland Spicer 18-851
C899R		9-1/16"	-	-	Camshaft Kits B8707 B8771 B8745 (Mack)	Batco 04-460921 BWP M-3121R Euclid E-4899 Leland Meritor 2210U5455 Midland Spicer 18-850