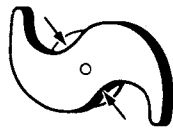
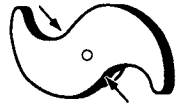
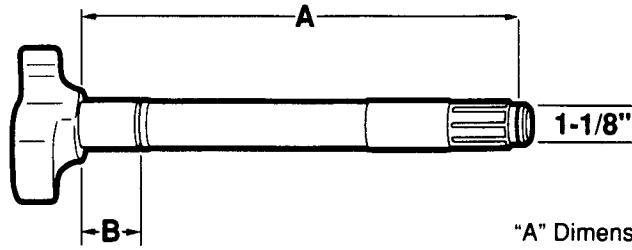


BRAKE CAMSHAFTS - DRIVE AXLE

Eaton Standard and "ES"



1-1/8"
LEFT HAND



1-3/8"
LEFT HAND

1-1/2" Dia. - 10 Spline

"A" Dimension: under head to beginning of lock ring groove

LH	RH	A	B	C	NOTES	REPLACES	
C769L		12-1/2"	-	-	"ES"	Batco 04-391252 BWP M-3127L Eaton 808290 Euclid E-9769	Leland L-2977 Meritor R607153 Midland CS41460 Spicer 18-985
	C770R				Camshaft Kit B8746Z	Batco 04-391251 BWP M-3127R Eaton 808291 Euclid E-9770	Leland L-2976 Meritor R607154 Midland CS41461 Spicer 18-984
C888L		12-15/16"	1-21/32"	-		Batco 04-371312 BWP M-3184L Eaton 1000839 Euclid E-4888	Leland L-2483 Meritor R607125 Midland Spicer 18-749
	C889R				Camshaft Kit B8648	Batco 04-371311 BWP M-3184R Eaton 1000840 Euclid E-4889	Leland L-2482 Meritor R607126 Midland Spicer 18-748
C740L		13-7/16"	2-7/32"	-	For Navistar	Batco 04-371352 BWP Eaton 35455 Euclid E-4740	Leland L-3079 Meritor R607049 Midland Spicer 18-743
	C741R				Camshaft Kit B8648	Batco 04-371351 BWP Eaton 35456 Euclid E-4741	Leland L-3078 Meritor R607050 Midland Spicer 18-742
C055L		15"	-	-		Batco 04-371512 BWP Eaton 35430 Euclid E-9055	Leland L-3145 Meritor R607103 Midland Spicer 18-745
	C056R				Camshaft Kit B8648	Batco 04-371511 BWP Eaton 35431 Euclid E-9056	Leland L-3144 Meritor R607104 Midland Spicer 18-744