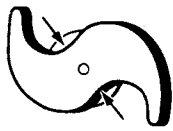
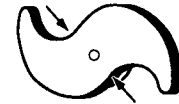
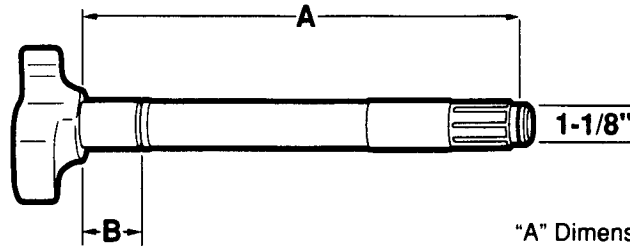


BRAKE CAMSHAFTS - DRIVE AXLE

Eaton Standard and "ES"



1-1/8"
LEFT HAND



1-3/8"
LEFT HAND

"A" Dimension: under head to beginning of lock ring groove

1-1/2" Dia. - 10 Spline

| LH | RH | A | B | C | NOTES | REPLACES | |
|-------|-------|----------|---|---|-----------------------|--|--|
| C800L | | 8-9/16" | - | - | For Mack and Navistar | Batco 04-370862 BWP M-2615L Eaton 1000087 Euclid E-2800 | Leland L-1632 Meritor R607036 Midland Spicer 18-727 |
| | C799R | | | | | Camshaft Kit B8648 | Batco 04-370861 BWP M-2615R Eaton 1000088 Euclid E-2799 |
| C490L | | 8-5/8" | - | - | "ES" | Batco 04-390862 BWP M-3129L Eaton 808708 Euclid E-5490 | Leland L-2971 Meritor R607111 Midland Spicer 18-941 |
| | C491R | | | | | Camshaft Kit B8746Z | Batco 04-390861 BWP M-3129R Eaton 808709 Euclid E-5491 |
| C886L | | 10-1/2" | - | - | | Batco 04-371052 BWP M-3176L Eaton 70308 Euclid E-4886 | Leland L-3077 Meritor R607261 Midland Spicer 18-735 |
| | C887R | | | | | Camshaft Kit B8648 | Batco 04-371051 BWP M-3176R Eaton 70309 Euclid E-4887 |
| C776L | | 11-1/2" | - | - | | Batco 04-371152 BWP M-1571L Eaton 70306 Euclid E-1776 | Leland L-1203 Meritor R607016 Midland CS41760 Spicer 18-739 |
| | C775R | | | | | Camshaft Kit B8648 | Batco 04-371151 BWP M-1571R Eaton 70307 Euclid E-1775 |
| C492L | | 11-1/2" | - | - | "ES" | Batco 04-391162 BWP M-3128L Eaton 806526 Euclid E-5492 | Leland L-2975 Meritor R607105 Midland CS41458 Spicer 18-943 |
| | C493R | | | | | Camshaft Kit B8746Z | Batco 04-391161 BWP M-3128R Eaton 806527 Euclid E-5493 |
| C787L | | 12-7/16" | - | - | For Mack and Navistar | Batco 04-371252 BWP M-2616L Eaton 71306 Euclid E-2787 | Leland L-1620 Meritor R607030 Midland CS41042 Spicer 18-741 |
| | C786R | | | | | Camshaft Kit B8648 | Batco 04-371251 BWP M-2616R Eaton 71307 Euclid E-2786 |