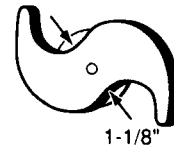
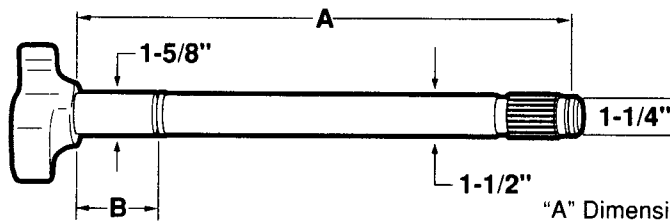


BRAKE CAMSHAFTS - TRAILER

Spicer "XL" And "Xtra-Life" With 1-5/8" Journal



LEFT HAND

"A" Dimension: under head to beginning of lock ring groove

1-1/2" Dia. - 28 Spline

| LH | RH | A | B | C | NOTES | REPLACES | | | |
|-------|-------|-----------|--------|---|-----------------------|----------|-----------|---------|--------------|
| C314L | | 26-1/4" | 2-1/4" | - | | Batco | 04-562632 | Meritor | |
| | | | | | | BWP | | Midland | CS41434 |
| | | | | | | Euclid | | Spicer | 17-937 |
| | | | | | | Leland | L-3379 | | M16WKL25-264 |
| | C315R | | | | Camshaft Kit B8792 | Batco | 04-562631 | Meritor | |
| | | | | | | BWP | | Midland | CS41435 |
| | | | | | | Euclid | | Spicer | 17-936 |
| | | | | | | Leland | L-3378 | | M16WKR25-264 |
| C737L | | 26-15/16" | 2-1/4" | - | | Batco | 04-562702 | Meritor | R607233 |
| | | | | | | BWP | M-3141L | Midland | |
| | | | | | | Euclid | E-9737 | Spicer | 17-941 |
| | | | | | | Leland | L-3407 | | M16WKL25-271 |
| | C738R | | | | Camshaft Kit B8792 | Batco | 04-562701 | Meritor | R607234 |
| | | | | | | BWP | M-3141R | Midland | |
| | | | | | | Euclid | E-9738 | Spicer | 17-940 |
| | | | | | | Leland | L-3406 | | M16WKR25-271 |