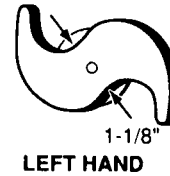
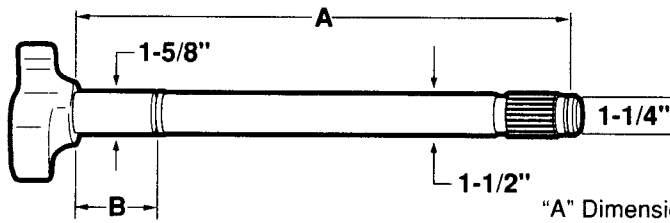


BRAKE CAMSHAFTS - TRAILER

Spicer "XL" And "Xtra-Life" With 1-5/8" Journal



"A" Dimension: under head to beginning of lock ring groove

1-1/2" Dia. - 28 Spline

LH	RH	A	B	C	NOTES	REPLACES
C931L		17-7/16"	2-1/4"	-	Camshaft Kit B8792	Batco 04-561742 Meritor R607227 BWP M-3696L Midland CS41414 Euclid E-9731 Spicer 17-915 Leland L-3283 M16WKL25-175
	C932R					Batco 04-561741 Meritor R607228 BWP M-3696R Midland CS41415 Euclid E-9732 Spicer 17-914 Leland L-3282 M16WKR25-175
C933L		20-7/16"	2-1/4"	-	Camshaft Kit B8792	Batco 04-562042 Meritor R607229 BWP M-3697L Midland CS41416 Euclid E-9733 Spicer 17-921 Leland L-3287 M16WKL25-205
	C934R					Batco 04-562041 Meritor R607230 BWP M-3697R Midland CS41417 Euclid E-9734 Spicer 17-920 Leland L-3286 M16WKR25-205
C310L		21-3/8"	2-1/4"	-	Camshaft Kit B8792	Batco 04-562142 Meritor BWP Midland Euclid Spicer 17-922 Leland L-3425 M16WKL25-215
	C311R					Batco 04-562141 Meritor BWP Midland Euclid Spicer 17-923 Leland L-3424 M16WKR25-215
C312L		22-7/8"	2-1/4"	-	Camshaft Kit B8792	Batco 04-562302 Meritor BWP M-3698L Midland Euclid Spicer 17-926 Leland L-3285 M16WKL25-231
	C313R					Batco 04-562301 Meritor BWP M-3698R Midland Euclid Spicer 17-927 Leland L-3284 M16WKR25-231
C935L		23-9/16"	2-1/4"	-	Camshaft Kit B8792	Batco 04-562352 Meritor R607231 BWP M-3147L Midland CS41420 Euclid E-9735 Spicer 17-929 Leland L-3289 M16WKL25-236
	C936R					Batco 04-562351 Meritor R607232 BWP M-3147R Midland CS41421 Euclid E-9736 Spicer 17-928 Leland L-3288 M16WKR25-236
C910L		24-1/16"	2-1/4"	-	Camshaft Kit B8792	Batco 04-562412 Meritor R607277 BWP M-3699L Midland CS41422 Euclid E-10909 Spicer 17-931 Leland L-3321 M16WKL25-242
	C911R					Batco 04-562411 Meritor R607278 BWP M-3699R Midland CS41423 Euclid E-10910 Spicer 17-930 Leland L-3320 M16WKR25-242